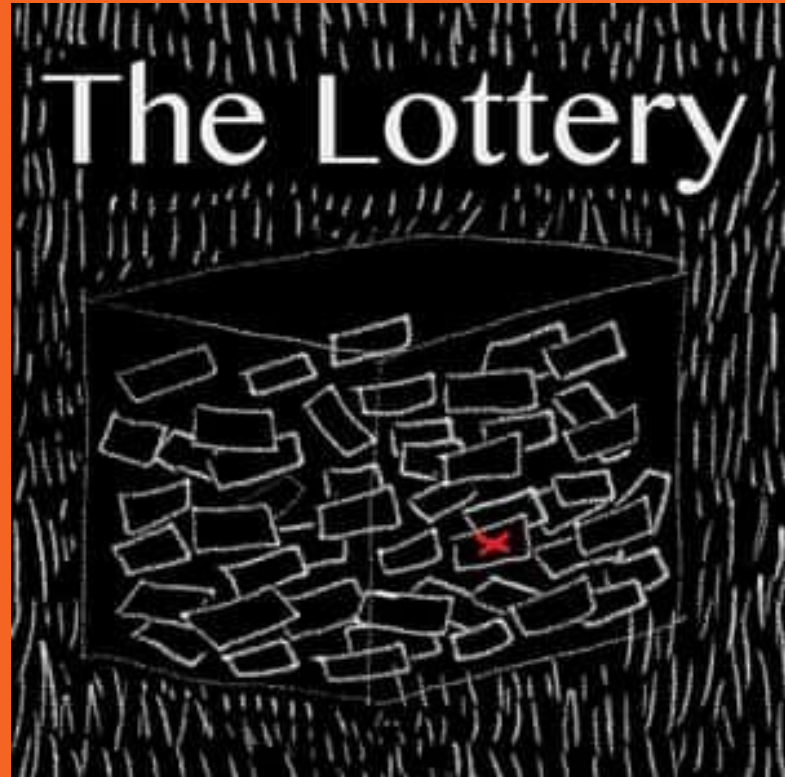

The Lottery



By Shirley Jackson

Published in 1948



Why is this significant?

Well This was just after World War 2 ended and people were VERY upset because they were trying to get rid of the horrors of war and genocide (the killing of a cultural group).

Why were people so upset?

Shirley Jackson threw the dangers of blind obedience to tradition into the face of post- war society. What are the dangers of blind obedience???

Hitler's army blindly obeyed him and this led to the murder of millions of Jewish people.



Can you think of other examples where people blindly follow a leader and it leads to terrible things?

Let's discuss

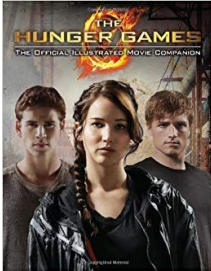
1. Were you surprised by the **ending** of the story?

2. How does the author foreshadow the ending?



Let's discuss

3. How does the **setting** affect the story? Does it make you more or less likely to anticipate the ending?
4. How is this story similar to movies you've watched or books you've read?



This is a different
Story when you
read it the
second time ...
What parts take
on a different
meaning?

Symbolism

- ◇ The black box (coffin)
- ◇ The color black (death, evil)
- ◇ The stones
(sticks and stones may break my bones
...well they did.)
- ◇ The black dot (sign of evil, stigma, tainted)
- ◇ The Village Square (congregation, sense of community)
- ◇ Mr. Summers (setting)
- ◇ Mr. Graves (grave-serious, cemetery, death)
- ◇ Mrs. Delacroix (of the cross – Christian theme)
- ◇ Mr. Warner (he warns people)